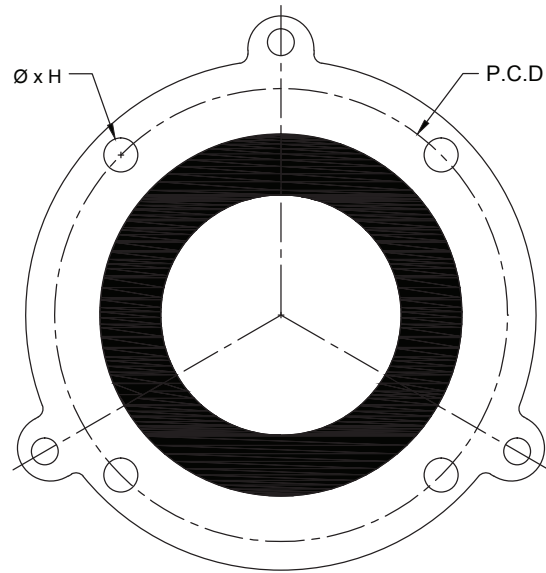
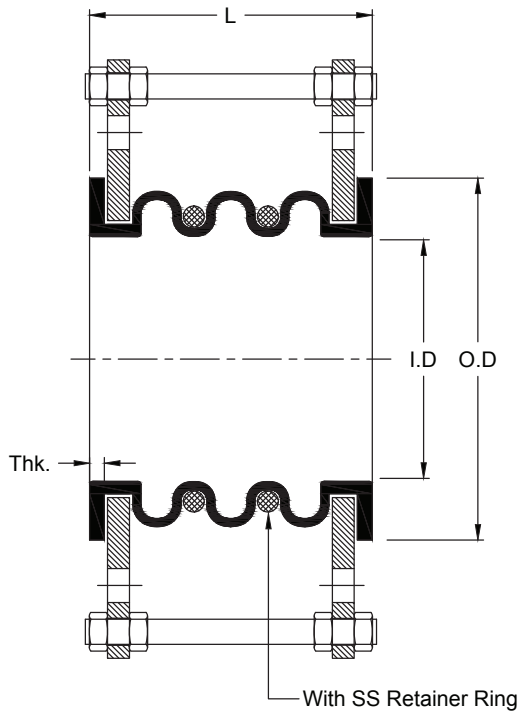


PTFE HIGH PRESSURE BELLOW



Dimension detail				
Size (NB)	O.D	I.D	L	THK.
25	50	25	100	6
40	70	40	100	6
50	90	50	100	6
80	125	75	100	7
100	150	100	100	7
150	215	150	150	8
200	270	200	150	8
250	320	250	150	8
300	381	300	150	9
400	470	400	150	9
450	533	450	150	9
600	692	600	150	9

Specification:

Body: PTFE / CFT

Flange: Carbon Steel / SS304 / SS316

Design Pressure: 10 Kg/Cm²

Operating Pressure: 5-6 Kg/Cm²

Operating Temperature: 100°C-130°C

Vacuum: Full

Convoulation: 3

