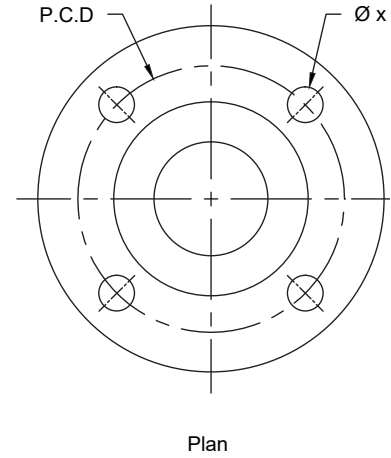
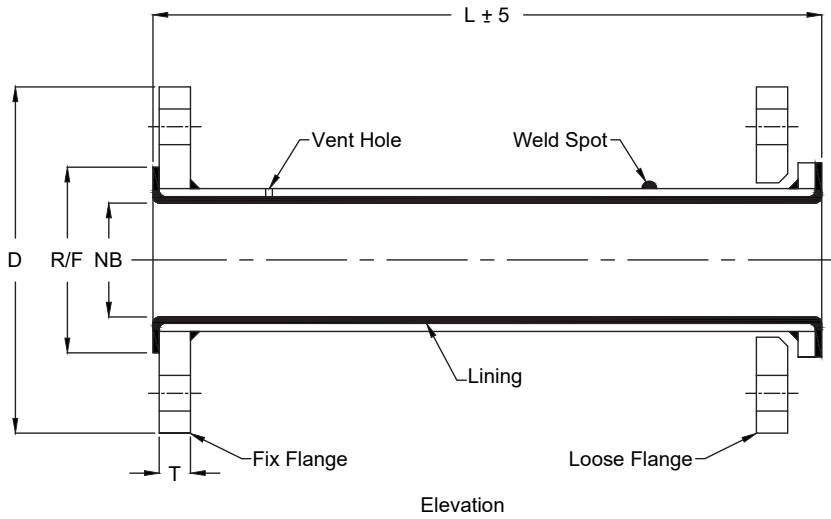


LINED PIPE



Dimension detail			
Size		Lining Thickness	Length ± 5mm
NB	Inch	± 0.5mm	Maximum LG
25	1"	3	3000
40	1½"	3.5	3000
50	2"	3.5	3000
80	3"	4	3000
100	4"	5	3000
150	6"	6	3000
200	8"	7	1000
250	10"	7	1000
300	12"	7	1000

Specification:

Pipe: • Seamless Sch. 40 CS ASTM A 106 Gr.B,
• ASTM A312 TP 304 / TP316

Flange: IS 2062 / ASTM A105, ASTM A351 Gr. CF8

Lining : PTFE / HDPE / PP / PVDF

Inspection & Testing: ASTM F1545-97

Hydraulic Test: 25 Kg/Cm²

Spark Test: 15 Kv

Flange dimension detail (MM) (ANSI CLASS 150#)					
R/F	P.C.D	D	T	No. of Hole (N)	Hole Dia. (Ø)
50.8	79.4	108.0	14.5	4	15.9
73.0	98.4	127.0	17.5	4	15.9
92.1	120.7	152.4	19.5	4	19
127.0	152.4	190.5	24.0	4	19
157.2	190.5	228.6	24.0	8	19
215.9	241.3	279.5	25.5	8	22.2
269.9	298.5	342.9	29.0	8	22.2
323.9	362.0	406.4	30.5	12	25.4
381.0	431.8	482.6	32.0	12	25.4

